

# Queen For A Day –by Tempting Tangles Designs



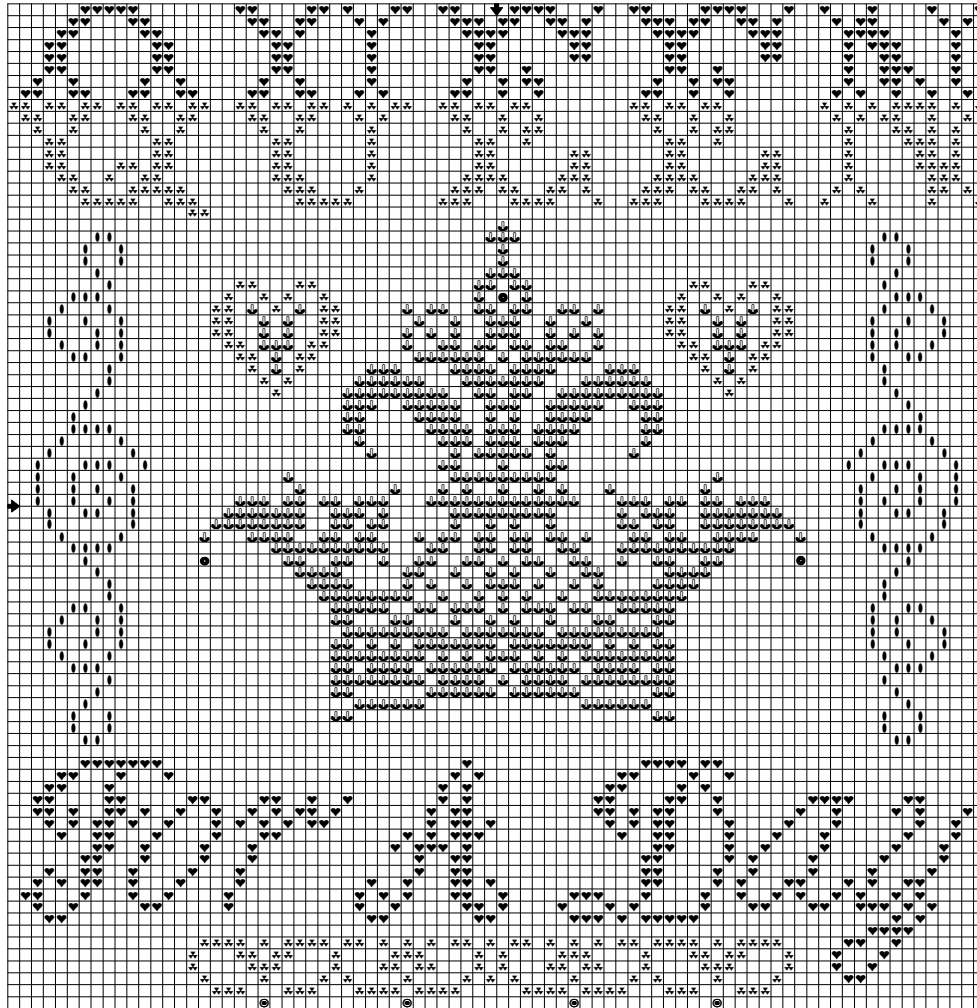
Compliments of:

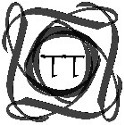





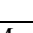
## wichelt imports, inc.

N162 State Hwy. 35  
Stoddard, WI 54658-9711, U.S.A.  
wichelt@wichelt.com



800-356-9516 • 608-788-4600 • Fax: 608-788-6040  
www.wichelt.com • www.millhillbeads.com



Key	Mill Hill Bead	Dinky Dyes Silk Floss	Color	 <b>Tempting Tangles Designs</b>
		143 Lost Gold	Topaz-Medium	
		40 Daydream	Blue green/plum var	
		72 Cabernet	Plum-Dark	
		138 Warena	Blue green/plum/gold var	
	Glass Pebble Bead #05557 (3)		Bead: Old Gold	
	Glass Bead 6° #016037 (4)		Bead: Abalone	
<b>Instructions: Queen For A Day</b> Model stitched on Wichelt's 28 count linen Lavender Sunset (marbled) 76513. Stitch over 2 threads with 2 strands floss.  <b>Design size 82 x 84; Finished size 5 7/8" square.</b>			<b>Beads:</b> attach each of the 4 Abalone beads along lower border; attach each of the 3 Old Gold beads on crown: 1 at very top just below the cross; 1 on each tip of the stylized Fleur-de-lis curling flower petals.	