

Frolicking Among BlueBells 79x78 stitches



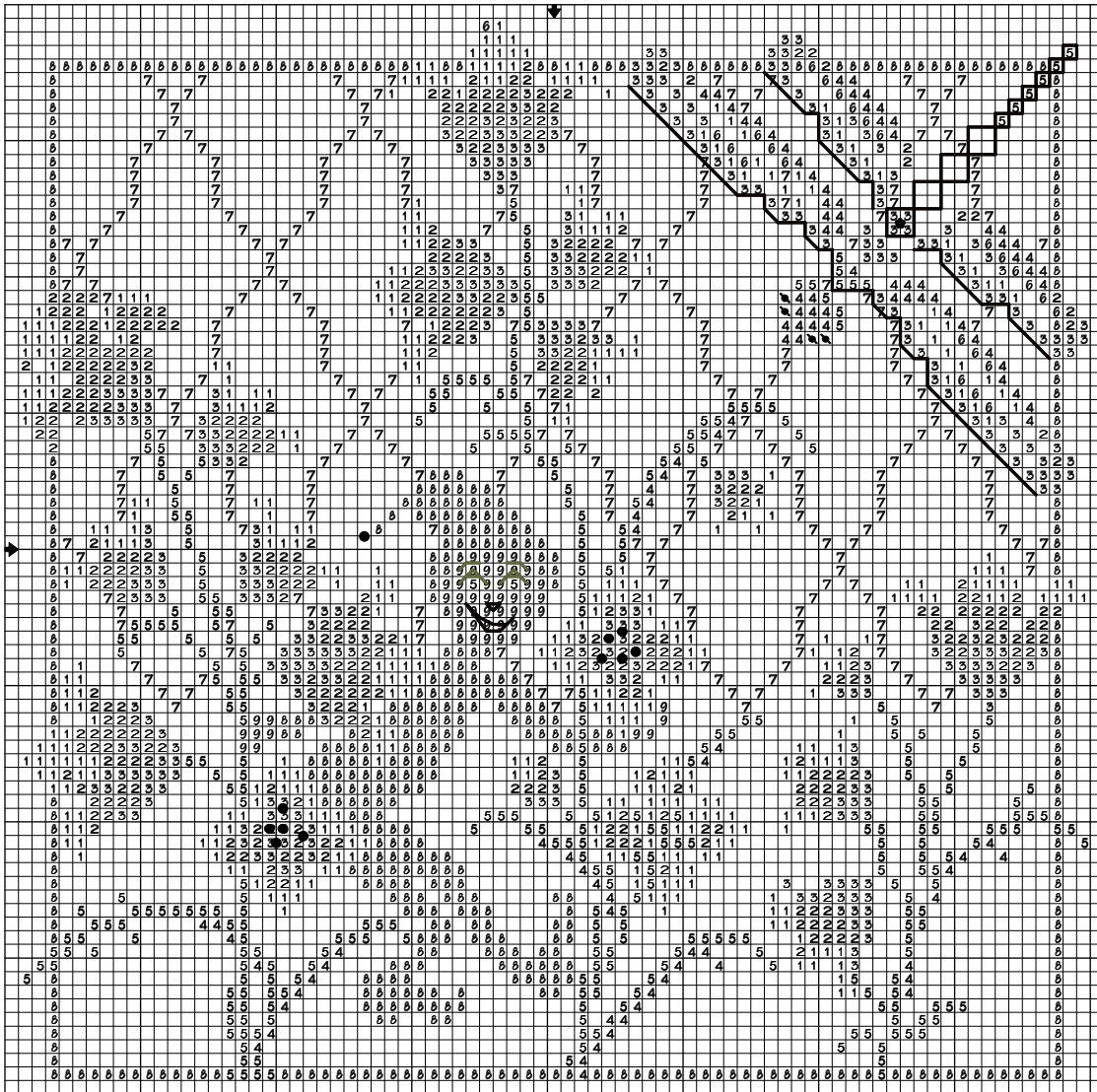
Compliments of:

wichelt imports, inc.

N162 State Hwy. 35
Stoddard, WI 54658-9711, U.S.A.
wichelt@wichelt.com



800-356-9516 • 608-788-4600 • Fax: 608-788-6040
www.wichelt.com • www.millhillbeads.com



Key	Back	Bead	DMC	Color	Instructions for Frolicking Among the Bluebells
1			3743	Antique Violet-VY LT	Model stitched on Wichelt's 32 count linen, Sunshower 65-290, over 2 threads with 2 strands floss. Design 79x78; Finished size approx. 5" square
2			3042	Antique Violet-LT	
3			3740	Antique Violet-DK	
6			422	Old Gold-VY LT	
7			746	Off White	
4			3053	Green Gray	
5			3051	Green Gray-DK	Elf eye details- 1 strand floss
8			3777	Terra Cotta-VY DK	Elf mouth/nose; dragonfly tail & wings -1 strand floss
9			3779	Terra Cotta-UL VY LT	
Mill Hill Crystal Treasures, Petite Glass Beads, Glass Seed Beads					
Petite			42027	Champagne	Flower centers (2 flowers); tip of elf's cap
Seed			00557	Victorian Gold	Dragonfly eyes;
Treasure			12188	4 Petal Flower Matte Pink/Ruby	Dragonfly tail

