



Compliments of:

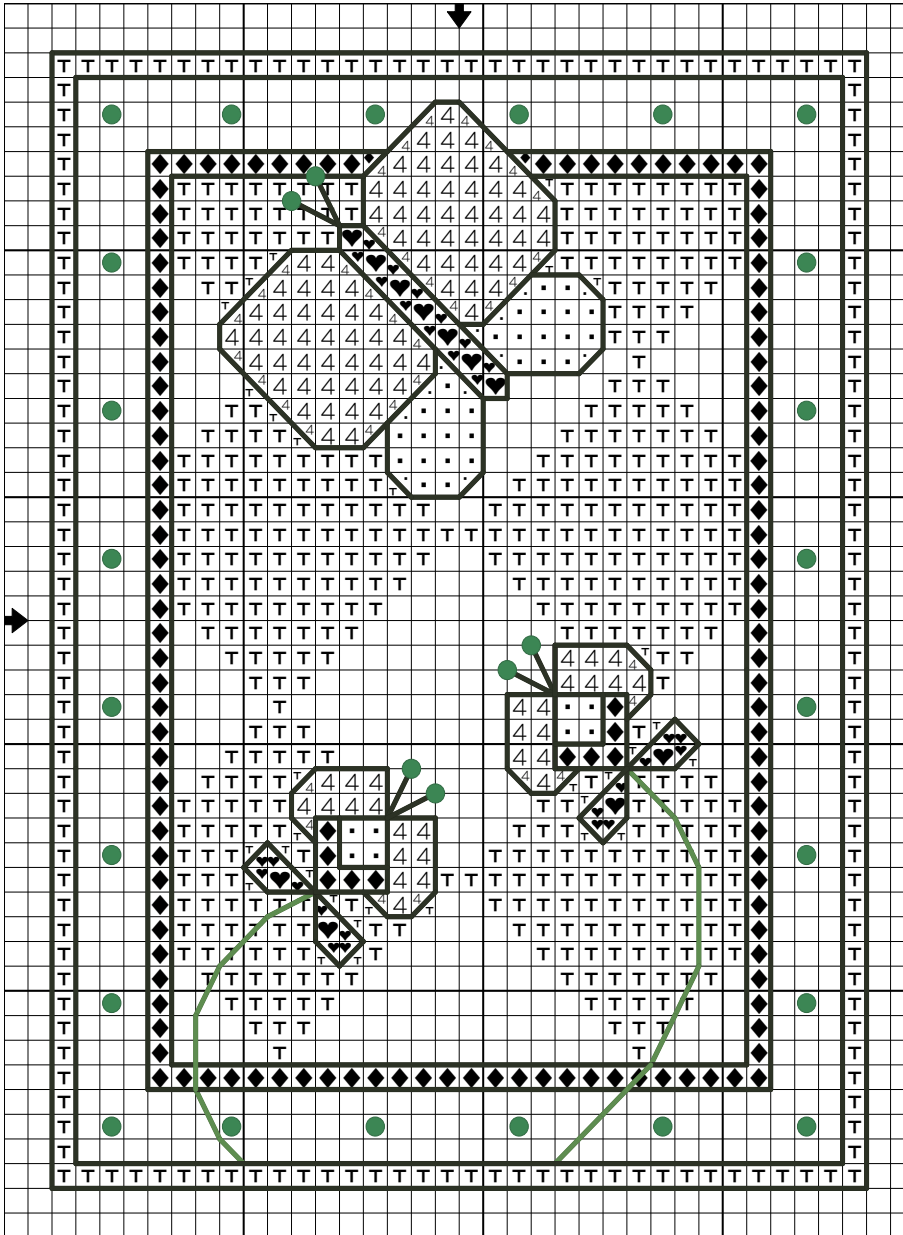
wichelt imports, inc.



N162 State Hwy 35
Stoddard, WI 54658-9711, U.S.A.
DIRECT ORDER: www.wicheltdirect.com

800-356-9516 • 608-788-4600 • Fax: 608-788-6040
wichelt@wichelt.com • www.wichelt.com • www.millhill.com

Nature in Purple
By Always Time to Stitch



Fabric: **357-271 Tropical Green**
Aida 14ct from
Wichelt Imports

Stitch count: 34w x 46h

Size: 2 3/8" w x 3 1/4" h

Symbol	DMC	Color
4	#208	Lavender– Vy Dk
.	#210	Lavender– Md
◆	#327	Violet– Vy Dk
T	#517	Wedgewood– Dk
♥	#987	Forest Green– Dk

Backstitching: #310 Black

Beads: Mill Hill #02055
Brilliant Green

Directions: Use 2 strands to cross stitch. All backstitching done with 1 strand of #310 Black with the exception of the stems of the flowers. Use 2-strands of #987 Forest Green. Once stitched attach seed beads using 1-strand of #310 using half stitches as indicated by dots on the chart.

©2009 Always Time to Stitch, Jennifer Rodriguez, 708-425-6793, alwaystimetostitch@comcast.net

Neither chart or finished design may be sold or kitted. Stores may reproduce for handout or newsletter purposes only.