



FREE GRAPH

Conjuring Card Case Project



Materials needed:

For a finished 2 3/4 x 4 inch card case you will need an 8" x 14" piece of 18-ct mono canvas. Note that the canvas is folded in thirds for the finished case.

Two colorways are given below. Tip: if you select your own threads, choose a canvas color close to the thread color so canvas will not show.

Colorway 1 pictured - natural brown or Victorian green canvas suggested

Caron Waterlilies Silk #077 Royal Jewels	1 - 6 yd. skein*
Rainbow Galleries Splendor Silk S1037 Dk Plum	1 - 8 yd. card*
Rainbow Galleries Splendor Silk S1020 Oregon	portion of an 8 yd. card
Au Ver a Soie Soie d'Alger #3411 Gris Blau	portion of a 5 m. skein
Beads (Alt. Bead: Mill Hill #12260) and 10 inches of 3/8" wide Grosgrain ribbon	

Colorway 2 - white canvas suggested

Caron Waterlilies Silk #007 Pistachio Nut	1 - 6 yd. skein*
Rainbow Galleries Splendor Silk S1030 Medium Blue Violet	1 - 8 yd. card*
Rainbow Galleries Splendor Silk S830 Sea Green	part of 1 - 8 yd. card
Au Ver a Soie Soie d'Alger Blanc	part of 1 - 5 m. skein
Beads and 10 inches of 3/8" wide Grosgrain ribbon	

* Full skein/card needed

© Cara Hayes, 2007. All rights reserved. This document may not be reproduced or shared with anyone except with written permission of the author.

© 2016 October Free Chart by Cara Hayes, stores may reproduce for handout or newsletter purposes only. Chart cannot be kitted or sold. Compliments of Wichelt Imports, Inc.



FREE GRAPH

Project Plan

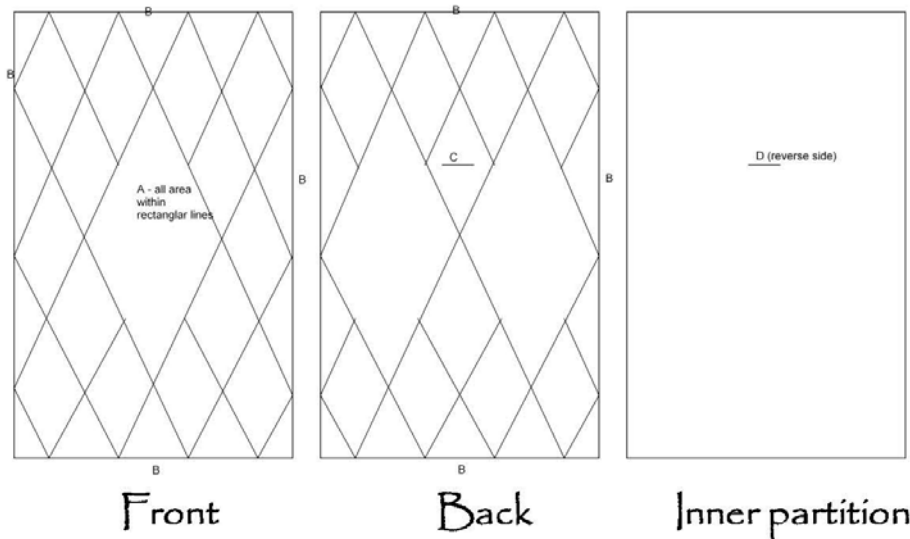
Part 1

- Stitch slit opening for ribbon (back side)
- Set up the front side Florentine pattern and stitch.

Part 2

- Complete top edge finishing and ribbon attachment with bead trim.
- Fold and finish the sides and bottom
- Attach charm to ribbon

Line drawing



Stitch Legend

- A Upright Gobelin
- B Blanket stitch (surrounds all edges)
- C Slit opening with blanket stitch surround
- D Whip stitch (ribbon attachment)



FREE GRAPH

Prepare canvas.

1. Draw design line that is 70 threads tall x 138 threads wide.
2. Draw front side outline 3 threads inside of top and side lines. It is 40 x 64 threads. Skip 6 threads. Draw back side outline 40 x 64 threads. Skip 6 threads. Draw inner partition outline 40 x 64 threads.
3. Mark slit opening 21 threads down from top. Center it and mark 6 threads wide x 2 threads tall.

Stitch Slit opening

1. Back stitch one thread around slit area and cut out canvas as shown on dotted lines.
2. Use blanket stitch to surround slit- 5 strands of silk floss.
3. Turn corners as shown in Diagram 2.

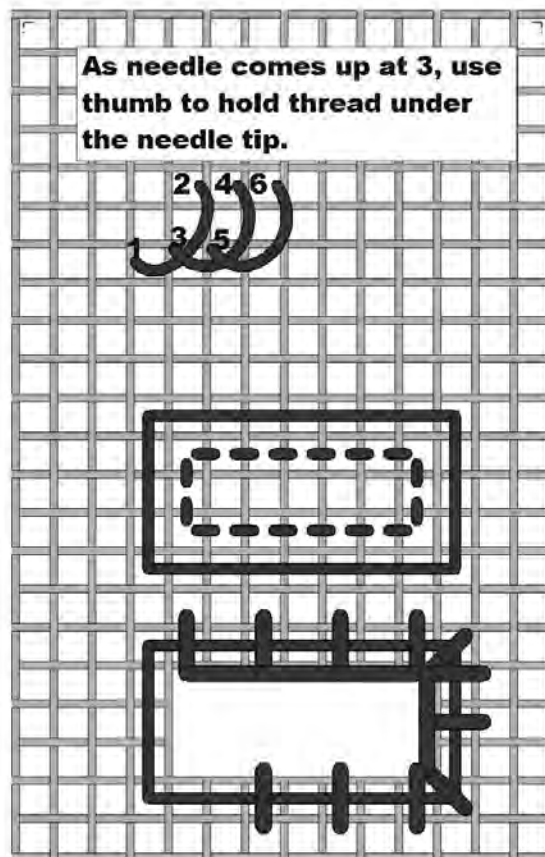
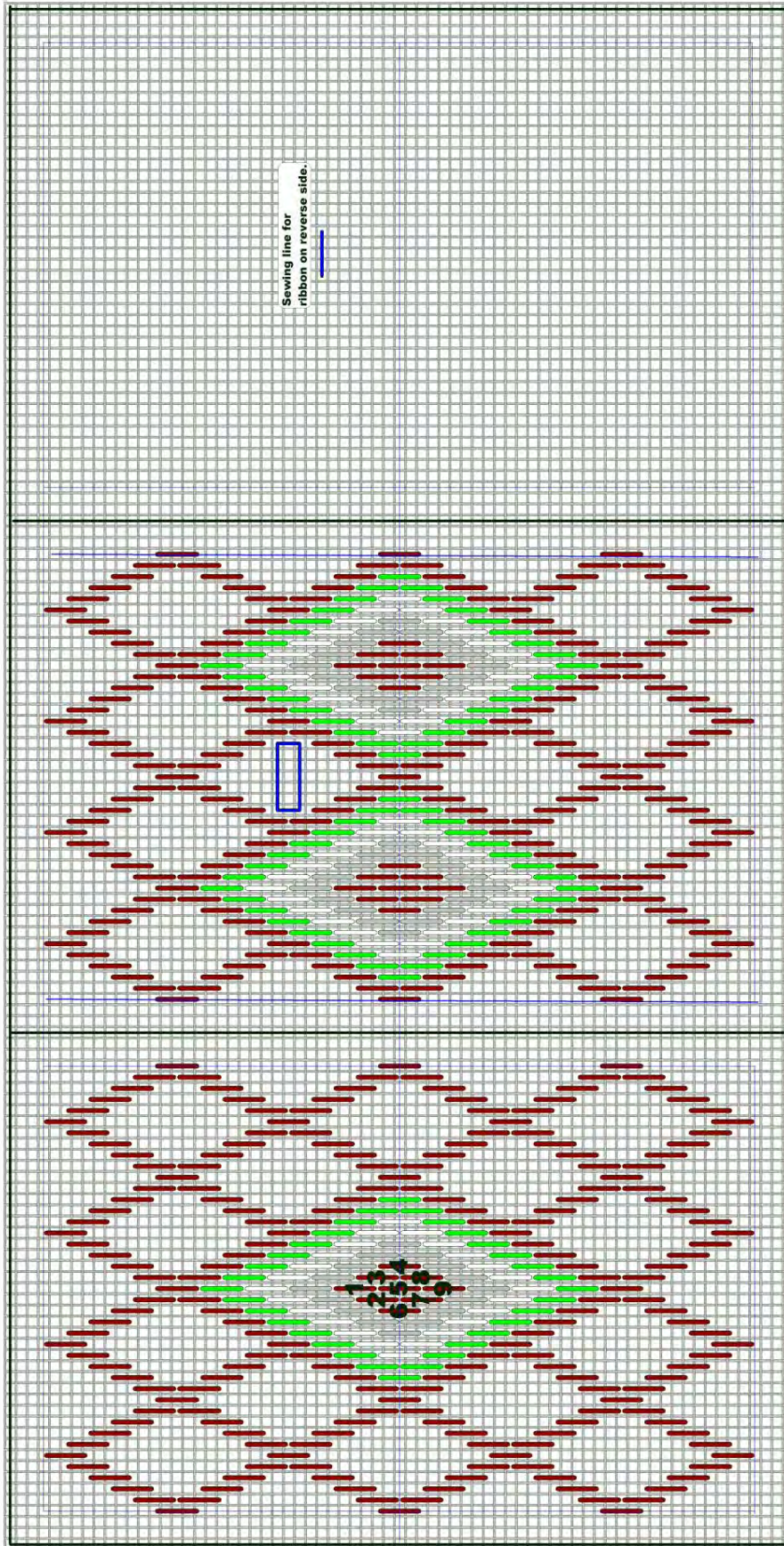


Diagram 2. Top to bottom, blanket stitch, Back stitch area, blanket stitch applied to slit.



FREE GRAPH



Conjuring card case diagram. 138 threads wide x 70 threads tall. Each section of trifold case is 40 x 64 threads separated by 6 threads.