



Compliments of:

**wichelt imports, inc.**

N162 State Hwy 35  
Stoddard, WI 54658-9711, U.S.A.  
DIRECT ORDER: www.wicheltdirect.com

800-356-9516 • 608-788-4600 • Fax: 608-788-6040  
wichelt@wichelt.com • www.wichelt.com • www.millhill.com

# Turner

By Karen E. Dudzinski  
Of *Textured Treasures*

Design Size: 2.5" x 2.5"  
Fabric: Wichelt 28 ct Sage Jobelan  
429-85

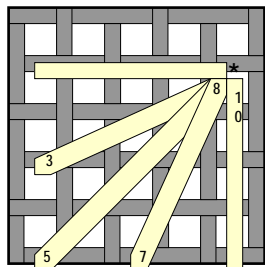
Fibres:  
DMC Jewel Effects floss E703 & E3837  
(aka 5289)  
DMC Variations floss 4050  
DMC #12 Perle cotton Ecru 3042  
Rainbow Gallery Neon Rays N09

- For the green band, first complete the Rice Stitch center with 2 strands of DMC 4050.
- Next, complete the mauve band working the central blocks with 1 strand of #12 Ecru, and the outer blocks with 1 strand of #12 3042.
- Finish the mauve band using a single strand of purple metallic to stitch the edge accents.
- Similarly, use a single strand of green metallic for the Quarter Eyelets along the green band.
- With 1 strand of #12 Ecru, stitch the Jessica.

9/08

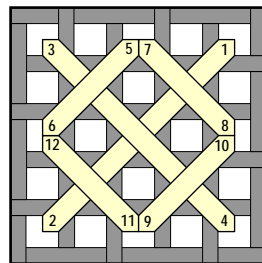
- One strand of Rainbow Gallery's Neon Rays is used to fill the Jessica; lay the top stitches with a single strand of green metallic.
- The border is created by first laying the base stitches using Back stitch and #12 Ecru; wrap with a single strand of #12 3042.

### Stitches Used:

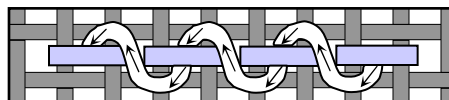


**Quarter Eyelet**

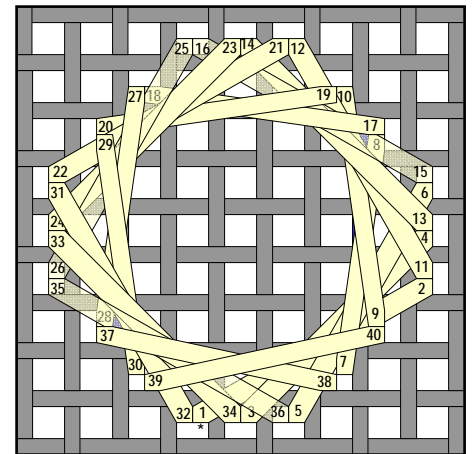
Even # stitches (2 4 6 etc) in \*



**Rice**



**Wrapped backstitch - over 2**  
NOTE: on the design above, the Back stitch is over 4.



**Jessica stitch - circular**