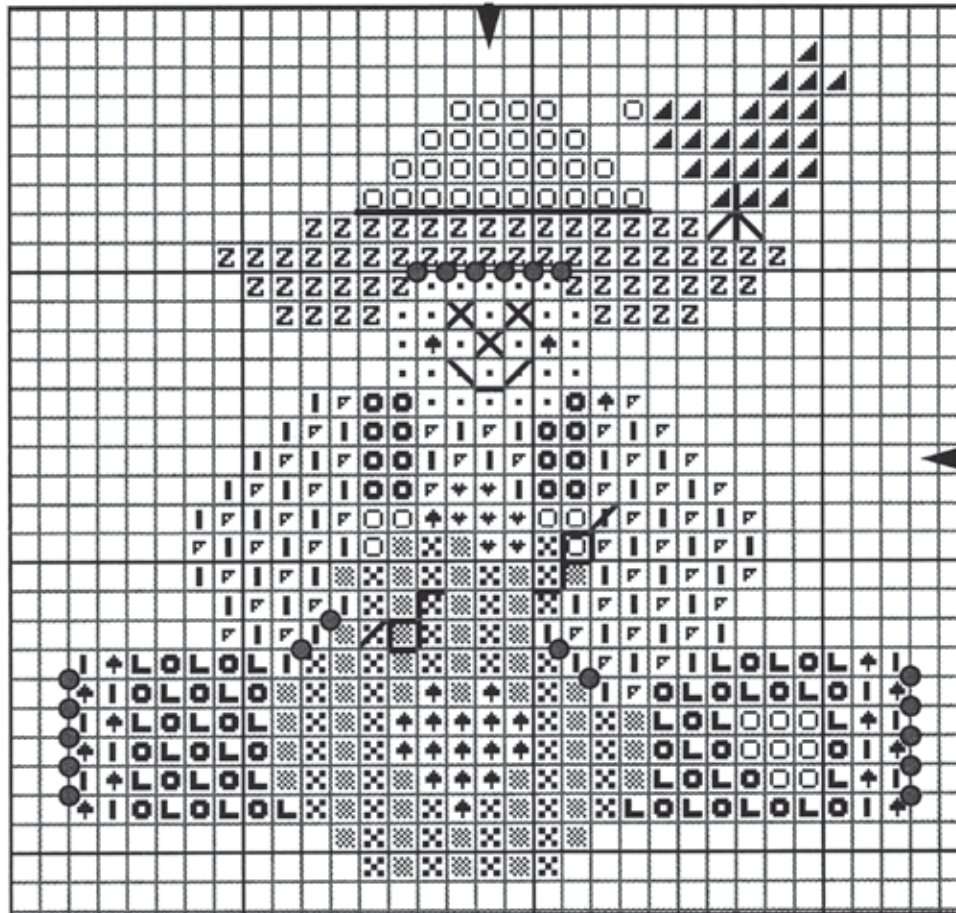


FREE GRAPH

November 2013

Apple Andy



Wicht Perforated Paper:
PP3 Antique Brown 14ct

Mill Hill Treasure: #12128 Apple

Needles: The large, long eyed needle is used for cross stitch and decorative stitches. The small needle with a tiny eye is used for beading and treasure attachment.

Color Code

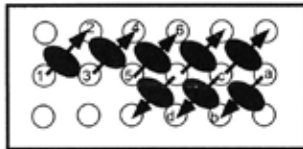
Symbol	Color	DMC	Stitch Used	Strands
I	ecru	ecru	bead attachment	2
I	red	304	cross stitch	3
L	black	310	bead attachment	2
L	blue	311	half cross stitch	6
L	green	319	bead attachment	2
X	orange	720	half cross stitch	6
Z	gold	729	cross stitch	3
Z	gold/yellow	729/725	blended floss loops	2/2
.	flesh	951	cross stitch	3
Symbol	Color	Mill Hill Bead	Floss Used	Strands
▼	emerald	00332	green	2
▸	petite cream	40123	ecru - cross stitch	2
○	petite gold	42011	gold - cross stitch	2
▲	matte red	62013	red	2
▲	matte black	62014	black	2
○	matte blue	62043	blue	2
⊗	matte orange	62044	orange	2
Symbol	Mill Hill Treasure	Description		
	12128	apple attach with red floss		

General Beading Instructions

Carefully separate beads matching colors to the description. Some shades are close in color. Please read special instructions before starting to stitch this project.

1. Separate floss into single strands. The beginning thread (2 strands of floss in designated color) should be held at the back until you have covered it with stitches or begin with a knot on the front side and cover this thread on the back with stitches as you work. All other "starting" or "stopping" threads should be woven securely into worked threads on the back.

Note: If you have difficulty putting 2 strands of floss into the eye of the needle, put one strand through the eye and pull the end down so there are 2 working strands.



2. Counted Bead Embroidery is worked with half cross stitch. Begin in the lower left corner, attach a bead and finish the stitch in the upper right corner. All stitches must go in the same direction in order for the beads to lay properly. Do not jump more than 3 or 4 stitches without first securing the thread on the back.

Special Instructions

Use 2 strands of floss for beading. When working with multiple strands of floss, separate (strip) the strands of floss and put them back together, laying them smooth. This will give the stitches a smooth, satiny appearance. Refer to the color code for the number of strands to use with the various stitches.

Step 1: Stitch as charted in designated colors and stitches. The petite beads are attached with a cross stitch, see stitch diagram. Backstitch the eyes with an "x" using 2 strands of blue floss, and the nose with an "x" using 2 strands of red floss. Backstitch the mouth and bird's legs using 2 strands of black floss, the vine using 2 strands of green floss and the brim of the hat using 2 strands of blue floss. At each dot (●) blend 2 strands each of the gold and yellow flosses and make floss loops about 1/2" in length. Once finished, clip the ends so they look like straw.

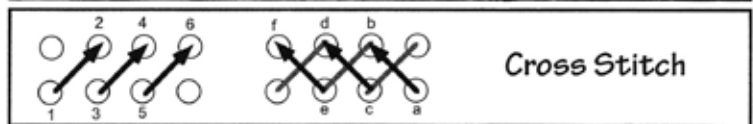
Step 2: Attach the apple treasure using 1 strand of red floss. Come up through the hole twice and lay the thread on each side of the stem. Refer to photo for placement.

Finishing: At this time back the pin with a self adhesive backing or glue a backing on. Allow to dry. Cut out the shape one hole outside of the stitched area. Be especially careful on curves and corners not to clip a working thread. A small sharp pointed scissors is most satisfactory for cutting out the pin. Glue the pin back at the top center using thick craft glue.

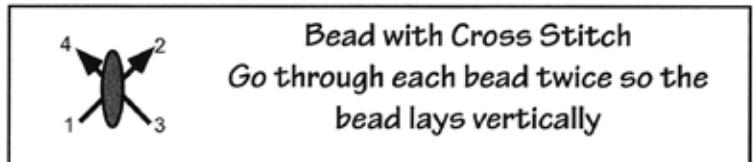
These instructions have been designed and printed with great care. However, human and mechanical errors are possible. Therefore, we cannot be held responsible. There may be slight color variances in floss or beads due to dye lots or occasional substitutions. These will not affect the finished project.

No portion of this kit may be reproduced in ANY form without prior written permission from Mill Hill Publications. Failure to comply is punishable under the Federal Copyright laws.

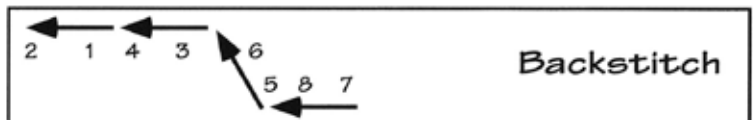
Stitch Diagrams



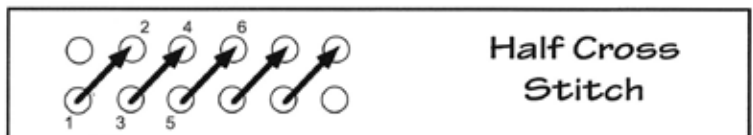
Cross Stitch



Bead with Cross Stitch
Go through each bead twice so the bead lays vertically



Backstitch



Half Cross Stitch