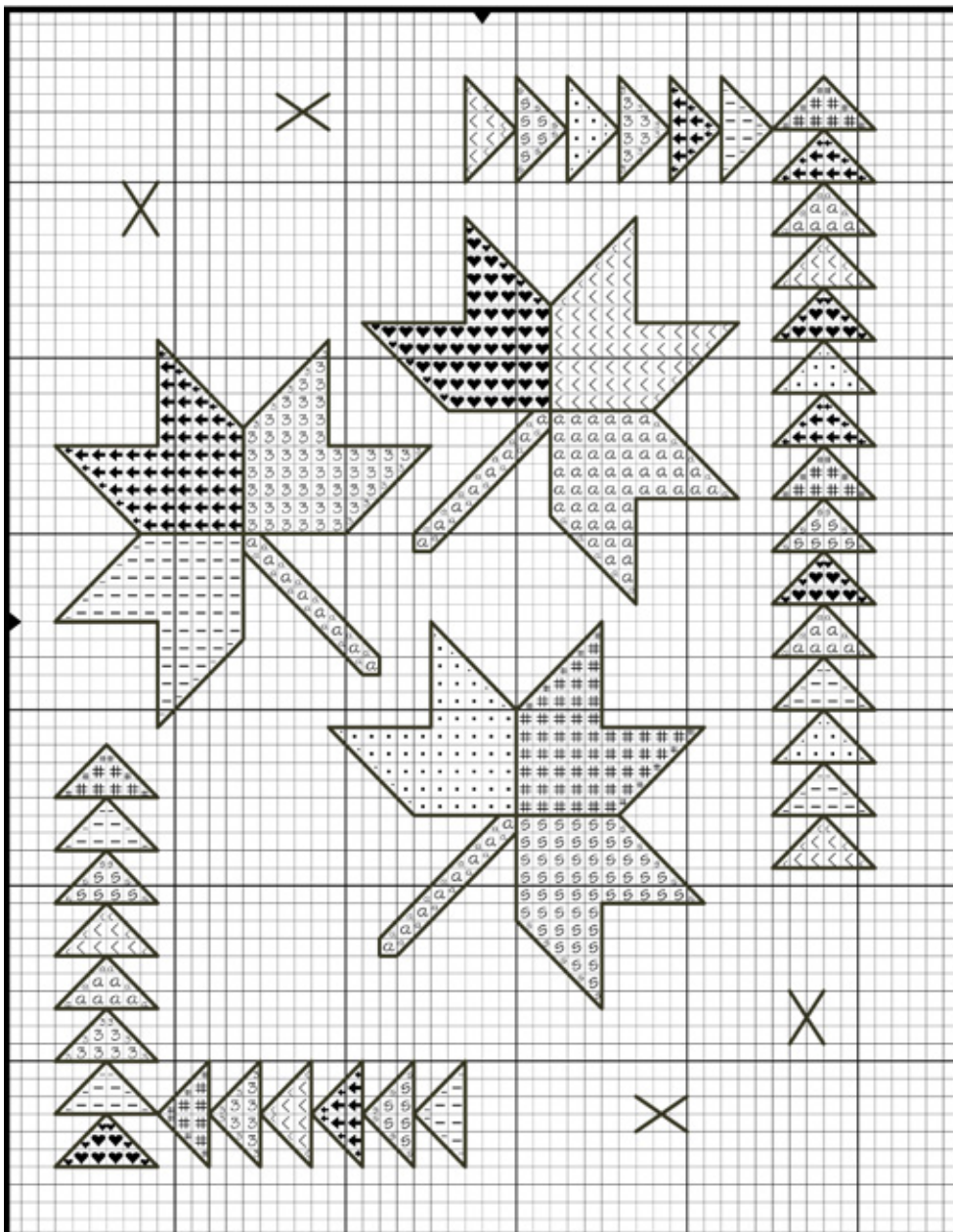


# FREE GRAPH

September 2013

## Falling Leaves

compliments of Jennifer Rodriguez, Always Time to Stitch



Symbol	Gentle Art #	DMC #
<	0460	733
←	0511	221
—	0530	758 / 437
#	0560	435 / 436
3	1111	938
.	1130	840 / 612
♥	7015	433
s	7016	371
a	7096	612
backstitch		3371

Wicht Fabric:  
429-525 Dense Fog Hand-Dyed  
Jobelan 28ct

Mill Hill Buttons: 2 of each  
#86189 Red Leaf  
#86187 Gold Leaf

Cross Stitches: 2 strands

Back Stitching: 1 strand

Directions:  
Attach Leaf buttons on the top  
left corner and bottom right  
corner as indicated by the "X".  
Place the 2 gold leaves on the  
top and 2 red leaves on the